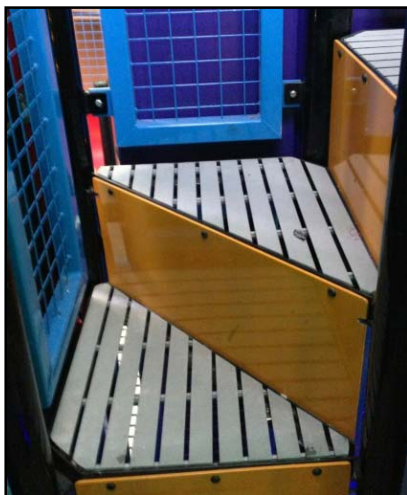


## DISCOVERY CHILDREN'S MUSEUM

International Play. Las Vegas, NV



Earlier this year, Langley BC based **International Play Co.** designed and installed a 7 – storey children's play centre in Las Vegas. The platforms and stairs used T-1800 pultruded grating.

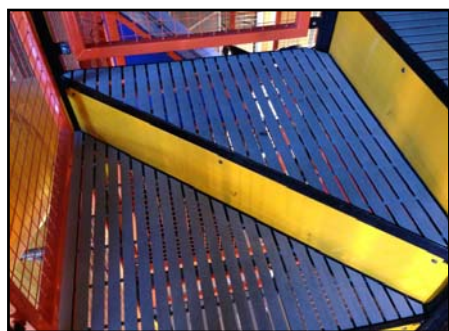
The 1" deep triangular stairs were fabricated at the Southwell facility in Burnaby, BC and dropped into a metal frame onsite.

The 1.5" deep platforms were supplied in 4' x 8' panels with nosing along both 8' sides, providing a child-safe connection between panels.



All S.S. insert clips were installed under the grating where there is no contact with children's feet. Cut-outs for water pipes were done on-site.

53 triangular stairs 1" deep were fabricated at the Southwell facility in Burnaby, BC and dropped into the metal frame onsite.



## COAST MOUNTAIN BUS COMPANY



**Coast Mountain Bus Company** in Vancouver, BC uses FRP railing for their elevating platforms on the trucks used to maintain electric trolley wires. As FRP does not conduct electricity, it provides a strong, safe alternative to steel or aluminum.



A removable HD Plastic strip was added to the top of the railing for added protection for the railing.

Custom modifications were designed to reinforce the strength of the posts.



[www.fiberman.ca](http://www.fiberman.ca) • [www.southwellcorp.com](http://www.southwellcorp.com) • [sales@southwellcorp.com](mailto:sales@southwellcorp.com)

TOLL FREE 1-877-984-7788 • T 604-980-3688 • F 604-980-6578

WESTERN CANADA: 5033 Regent Street • Burnaby, BC V5C 4H4 EASTERN CANADA: T 905-232-1834

USA: 4152 MERIDEAN ST. STE 105 - #455 BELLINGHAM, WA



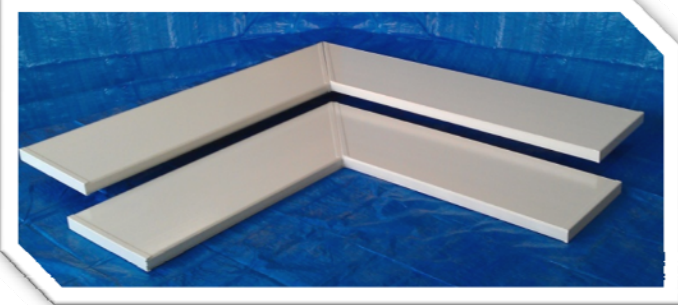
## ATEK HYDROGRAPHIC SURVEYS



When Paul Steffens and John Ringo of **Atek Hydrographic surveys** needed molded FRP grating for their pedestrian walkway in Powel River, they knew who to call. Fiberman had plenty of local stock to ship 33 panels for immediately delivery.



## SPA UTOPIA



Tired of cleaning mildew from benches in their saunas, **Spa Utopia** contracted Fiberman to build hollow, removable, light-weight FRP benches that are far easier to clean.



## VANCOUVER SEABUS TERMINAL



The maintenance dock at **Vancouver Seabus Terminal** was re-surfaced with T-5000 2" Pultruded grating supplied by Fiberman.



FRP is an excellent choice for marine applications as it is light-weight and will not be affected by the saltwater.

