

SOUTHWELL MOVES ALL OPERATIONS INTO ONE EXPANDED LOCATION

On November 1, 2011, Southwell moved its head office, warehouse facility and fabrication operations all together under one roof.

"We have been growing at a phenomenal rate and needed to move our two facilities together to a larger location. The 6,000 sq. ft. building and 12,000 sq. ft. yard will accommodate our customer's growing demand for our FRP products."

*Rick Van Rikxoort,
Co-President*



The new location has combined the office staff, sales, marketing, and customer service to work closer alongside our fabrication crew, shipping and receiving. This has streamlined all communications which ensures each customer's order is being handled in the most efficient manner.

Being closer connected to the major freeways and trucking routes also makes it much easier and quicker for semi-trailer trucks moving material with our larger shipments.

*Please update our new address in your records;
5033 Regent Street, Burnaby, BC V5C 4H4*

(All phone numbers and e-mail remain the same).



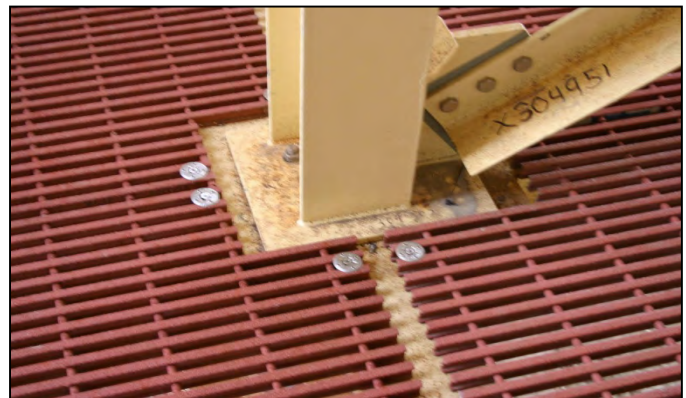
Pultruded Grating used as flooring extensively throughout the plant

FRP PULTRUDED GRATING INSTALLED IN POTASH PROCESSING PLANT IN ROCANVILLE, SASKATCHEWAN

Supreme Steel from Saskatoon, Saskatchewan engineered and installed FRP Pultruded Grating that was fabricated by Southwell in their controlled Fabrication Plant and shipped to the job site for easy installation.

"I have heard back from site that the FRP grating is fitting very nicely. No complaints at all so far. The field has installed all FRP panels in job 2178 for the 100's, 200's, 300's, 400's and a little of the lower 500's."

Chris Pierrard, Project Manager



Many panels required very detailed cutting of notches and radius curves to fit around support beams and tank footings.



FRP FABRICATION SERVICES TAKE ON MORE VOLUME IN LARGER FACILITIES

With the new 2500 sq. ft. Fabrication Shop, the crew can now take on larger projects and custom orders.

With the new fabrication shop, expanded shipping and receiving loading dock as well as our 3 acre works yard, our crew is ready to take on any project – big or small.

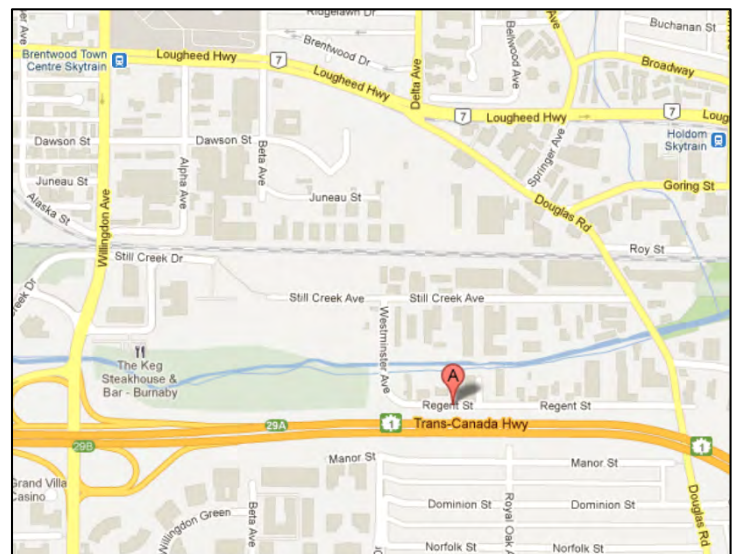


Our skilled workers are capable of fabricating custom orders.

SKYWARD TOWERS INSTALLED DURASHIELD HOLLOW CORE PANELS FOR CELLULAR PHONE APPLICATION

Durashield Hollow Core Panels are a non-conductive medium so they are commonly used for cellular phone towers. They provide physical protection as well as aesthetic appeal in any architectural application.

Recently **Skyward Towers** from Kitchener, Ontario added a new section beside an older section of a shroud in Alberta that had already existed. The challenge was for both areas to look uniform and match in colour. The existing panels were installed 5 years ago and had not faded at all. Everything blended together perfectly.



Our new location is north of Hwy #1 east of the Douglas Overpass

www.southwellcorp.com • sales@southwellcorp.com

TOLL FREE 1-877-984-7788 • T 604-980-3688 • F 604-980-6578

WESTERN CANADA: 5033 Regent Street • Burnaby, BC V5C 4H4 EASTERN CANADA: T 905-232-1834

USA: 4152 MERIDEAN ST. STE 105 - #455 BELLINGHAM, WA